

Short Operating Instructions

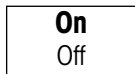
For further information, please refer to the operators Manual

METTLER TOLEDO XP / XS Analytical- and Precision Balances

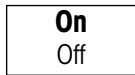
Basic Functions:

Switching on and off Display

1. Switch on display: Press the «On/Off» key briefly. The display performs a test and is then ready to weigh.



2. Switch off Display: Press and hold the «On/Off» key until the message "OFF" appears in the display. The display then fades and the balance is switched off.



User Profile: *only XP

Choose User Profile

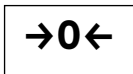
This key can be used to call up the desired user profile. Different settings can be stored in a user profile.

Example



Zero Display

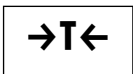
Zeroing: Press the «→0←» to set a new zero point.



Always use the «→0←» before you start the weighing procedure.

Tare Display

Taring: If you work with a Tare container, first zero the balance. Then put the Tare container on the balance and press «→T←», to tare the balance.

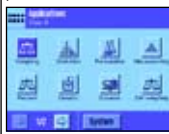


Additional Functions:

Weighing-Applications



Choose the application: If you want to change the application, then press the application menu button and choose another application.



Weighing Setup: For more precision / shorter stability time

Weighing filters: Weighing mode

1. Choose System-Setup



2. Define Weighing parameters



3. Define the Weighing mode



Advise:
Solids:
«Universal»

Powder, Liquid:
«Dosing»

Weighing filters: Environment

1. Choose System-Setup



2. Define Weighing parameters



3. Define Environment



Advise:
Fume cupboard – unstable weighing table:
«Unstable», «Very unstable»

Stable Weighing table, no drafts
«Standard», «Stable»

Weighing filters: Value Release

1. Choose System-Setup



2. Define Weighing parameters



3. Define Value Release



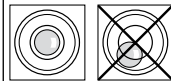
Advise:
Highest Precision:
«Very reliable»

Fast Value Release:
«Very fast», but less precision

Test:

Levelling, Internal Adjustment (Factory setting)

1. Level indicator is built-in in the device.



2. Level indicator is not centered.*



3. Release the clamps.*



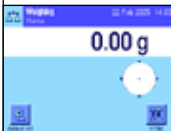
4. Levelling. After this process, lock the clamps again.*



5. Internal Adjustment



Pressing this function key triggers a balance adjustment using the built-in calibration weight. This can be implemented at any time.



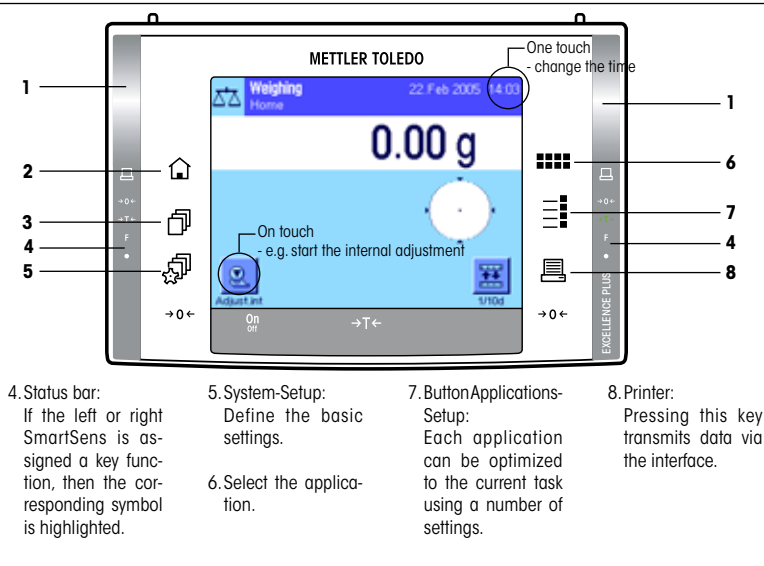
* depending on balance

METTLER TOLEDO Excellence Plus and Excellence Balances

Overview of the Terminal XP Analytical- and Precision balances:

XP Display Terminal

1. Button SmartSens:
Each of these two contact-free sensors can be assigned a key or menu function.
2. Button Home:
This key can be used to return to the "Home" user profile from any menu level in any application.

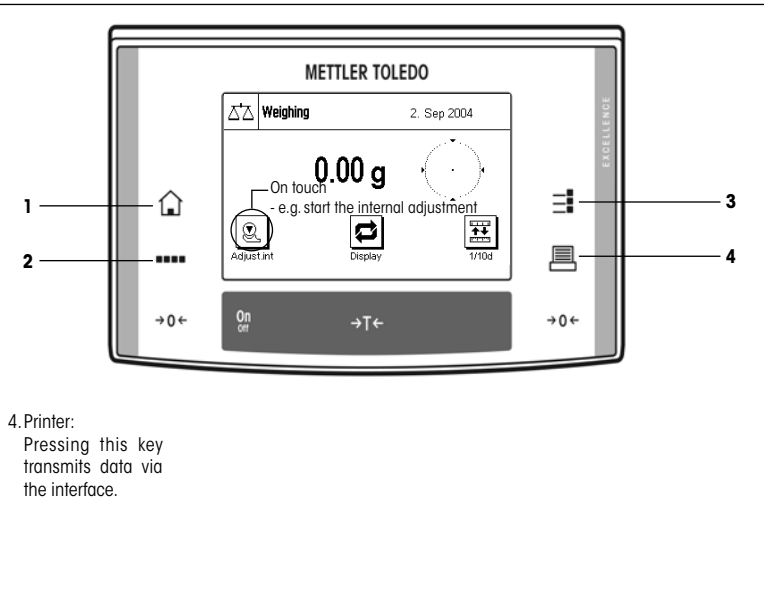


3. Button User profile:
This key can be used to call up the desired user profile. Different settings can be stored in a user profile.
4. Status bar:
If the left or right SmartSens is assigned a key function, then the corresponding symbol is highlighted.
5. System-Setup:
Define the basic settings.
6. Select the application:
Each application can be optimized to the current task using a number of settings.
7. Button Applications-Setup:
Each application can be optimized to the current task using a number of settings.
8. Printer:
Pressing this key transmits data via the interface.

Overview of the Terminal XS Analytical- and Precision balances:

XS Display Terminal

1. Button Home:
This key can be used to return to the "Home" user profile from any menu level in any application.
2. Weighing application:
By pressing this symbol you can choose the desired application.
3. Button Applications-Setup:
Each application can be ideally adapted to the current task using a number of settings.



4. Printer:
Pressing this key transmits data via the interface.

